



3911 LEMMON
AVE

For lease:
NWQ Lemmon
Ave & Reagan St
Dallas, TX 75219

VENTURE

AMANDA T. WELLES
AWELLES@VENTUREDFW.COM

HANNAH BOSWELL
HBOSWELL@VENTUREDFW.COM

Metrics

3911 Lemmon Ave
Dallas, TX 75219

Location

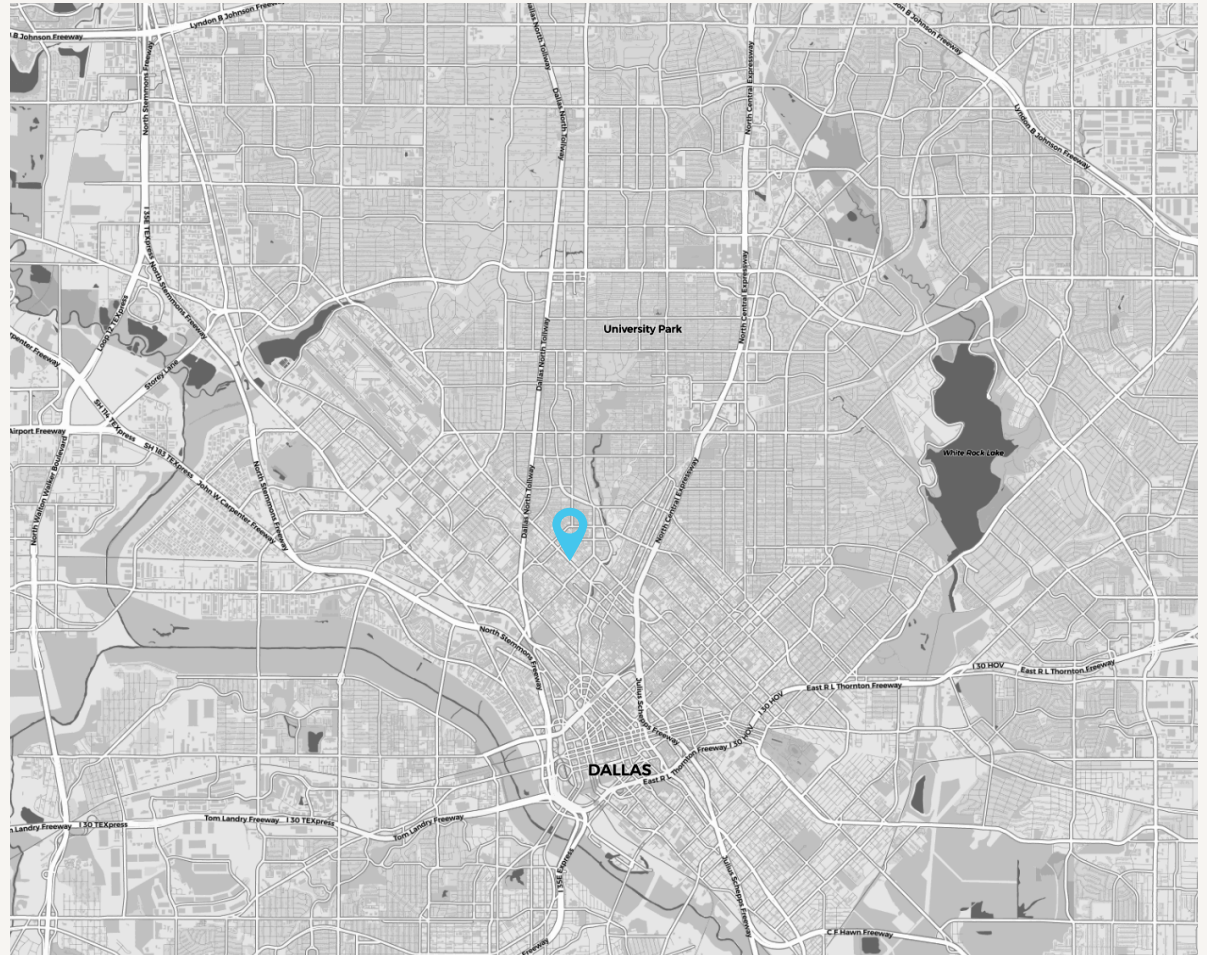
NWQ Lemmon Ave & Reagan St
Dallas, TX 75219

Size

6,980 SF

Traffic Counts

Lemmon Ave
36,127 VPD



Area Attractions



Property Highlights

3911 Lemmon Ave
Dallas, TX 75219

1. Highly visible street retail on Lemmon Ave
2. Dedicated parking
3. Trendy Oak Lawn/Uptown neighborhood

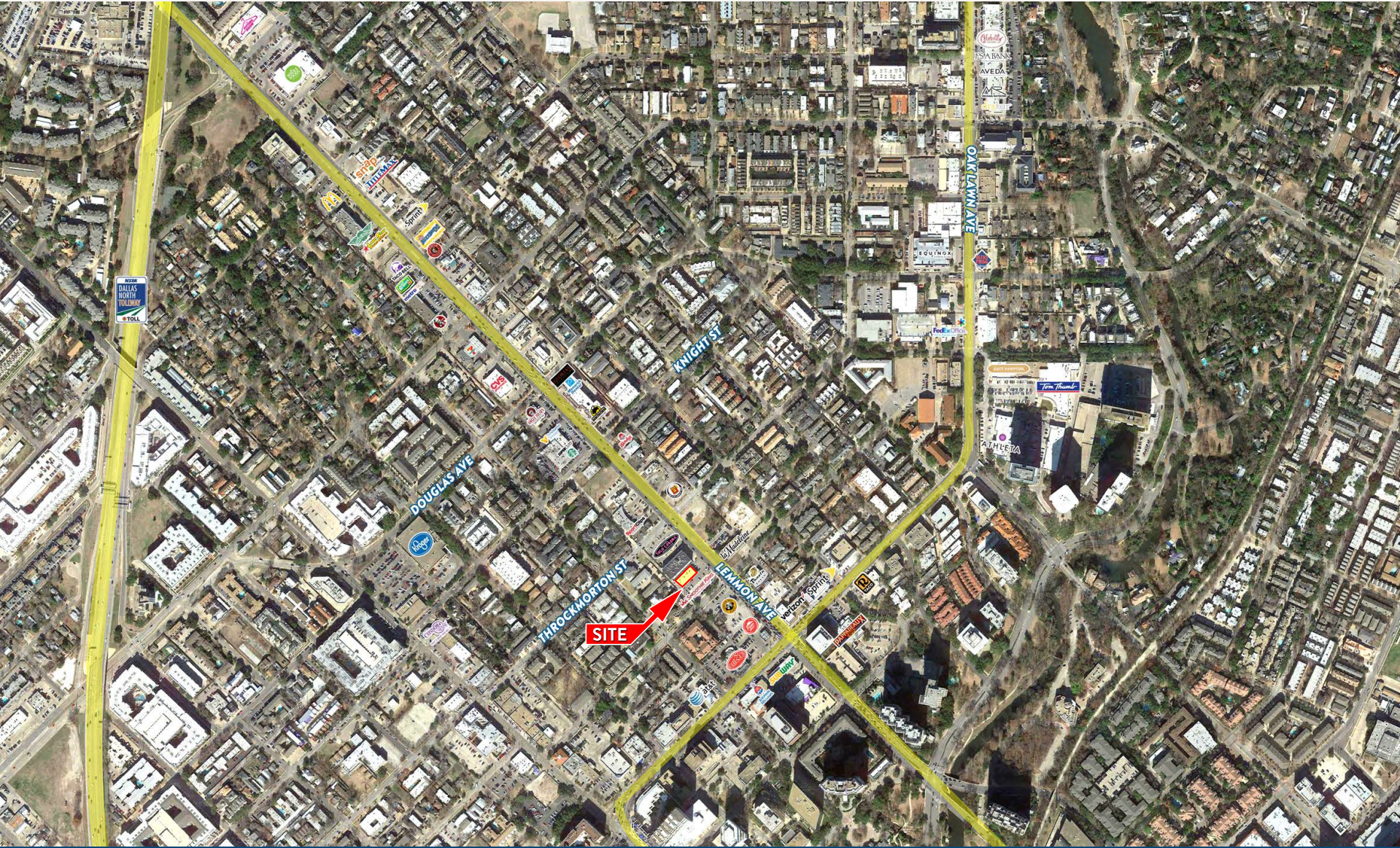


2025 Demographic Summary

	1 MILE	3 MILES	5 MILES
EST. POPULATION	41,106	216,340	415,265
EST. DAYTIME POPULATION	36,685	268,777	428,781
EST. AVG. HH INCOME	\$169,116	\$170,144	\$164,302

Aerial

3911 Lemmon Ave
Dallas, TX 75219



3911 Lemmon Ave
Dallas, TX 75219

Amanda T. Welles
Partner
awelles@venturedfw.com

Hannah Boswell
Associate
hboswell@venturedfw.com

(214) 378-1212

www.VentureDFW.com

8235 Douglas Ave
Suite 720
Dallas, Texas 75225

VENTURE

*The information contained herein was obtained from sources deemed reliable; however, Venture Commercial Real Estate, LLC, makes no guarantees, warranties or representations as to the completeness or accuracy thereof. The presentation of this property is subject to errors; omissions; change of price, prior to sale or lease; or withdrawal without notice.

HANNAH BOSWELL
hboswell@venturedfw.com

